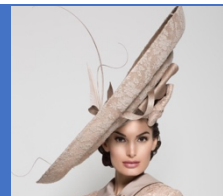


1-day Tuesday supply list

Basic Millinery Sewing Kit

Wire cutters
Needle nose pliers
Sewing shears
Scissors
Measuring tap
Dress making pins (and pincushion)
Thimble
(Clover) Wonder clips or pegs
Fabric marking pen or chalk
Hand sewing needles (also a curved needle - Amazon from John James)
Selection of threads
18" clear plastic ruler
Hat elastic
Combs
Millinery pins
Travel size hair dryer
Pencil or pen
Fray check
Scotch tape
Fast drying fabric or craft glue
Small spray bottle
Plastic cling wrap and press-and-seal wrap



Edwina Ibbotson

Lace covered hat and lace flowers

Pre-wired **straw** small brim with the edge turned under, and no Petersham added. Please select a simple form

A separate blocked crown, (preferable, if possible, keep this on the block).

Thread to match and invisible thread

1 yard of lace, nothing too heavy. For example, Chantilly lace, guipure lace or a light corded lace (colour of choice).

0.5 yards of petersham ribbon to match

1 yard of blocking rope

Basic sewing kit

Please note this class also requires

**Travel size steamer,
and iron.**

If you are travelling by car, kindly bring extra to share with other students.



Jane Taylor – Trimming hat with crin

A selection of:

- Premade felt or straw/sinamay cocktail hat
- Premade felt or straw/sinamay disc
- Premade felt or straw/sinamay brimmed hat

3-5 yards of vertical pleated crin around 3" wide to go with disc or brimmed hat -

10 yards of Plain crin 6" wide in ivory

or

in 3 colours to work with cocktail hat (then no spray paint needed) (3.5 yards of each color)

Plain small crin x 10 m to go with disc or brimmed hat

3 x spray paints for the folded crin technique to work with cocktail hat colour (Oasis or graffiti type spray)

Pearls to stitch or crystals in colour way of pleated crin -

Rose/flower to go with the small crin colour way

masks and gloves to use spray paint

Steam irons (If you are travelling by car please bring extra to share)

Basic sewing kit



Mela Hoyt-Heydon

Finished edges and polished bows

1 yard of 1-inch-wide wire edged ribbon
7 ¼ yards 1 ¼ to 1 ½ inch wide ribbon (can be 3 colors- 4, 1 ½ and 1 ¾ yards each)
2 ¼ yards 2-inch-wide ribbon
7 yards 3-inch-wide ribbon
4 yards 4" wide ribbon
1 ½-2 yards white cotton cord (1/16"-1/4" thickness)
1 yard size 21- or 22-gauge millinery wire or any lightweight wire
3 yards of 18- or 19-gauge millinery wire
Heavy thread (buttonhole or button/craft or quilting in a neutral color such as khaki or grey)
1-2 brims in any type of straw, wool or fur felt (do not have to be attached to a crown as we will be creating edging samples. Can be any size and even a partial brim piece can be used. Great way to use a cheap straw) Yes, you can bring a hat you want to edge.
3 yards of 1-inch-wide French elastic or tarlatan or even cotton bias tape for covering wire
1 yard taffeta, dupioni, silk or silk like fabric for edging and fabric bow (can use two different fabrics)
Sewing thread to match edging
Sewing machine-If you are driving and please bring your sewing machine. Arrowmont has a few machines for our use.



Laura Del Villaggio

“Fancy” Straw Fascinators

Uniquely woven straw hood, capeline or mat.Examples include zigzag, wicker, lined, spiral, lacy, knotted, and honeycomb.
Small to medium size fascinator block. Pillbox, percher, beret, button, teardrop, etc. If you don't own one, there will be some to borrow.
Blocking pins
Plastic wrap to cover your block (Cling Wrap or Press n' Seal)
Small inexpensive paint brush, flat and approx 1" wide (for applying stiffener)
2 yds millinery wire in #19 or #21 1 yd
French elastic (also called 1" bias crinoline)
1 yd #5 grosgrain ribbon in color that matches the color of your straw hat body
Additional grosgrain ribbon for trims. Any color(s). #5, #9 or #16
Threads to match grosgrain ribbons and straw
Attachment option such as comb, hat elastic or headband
Optional: <ul style="list-style-type: none">• Ribbon disk• Blocking stand
Basic sewing kit
Please note this class also requires Travel size steamer, and iron. If you are travelling by car, kindly bring extra to share with other students.



Phillip Rhodes Straw to gold

0.5 yards of sinamay straw

A parisial hood

Approx 2 yards millinery wire(18 and 21)

Approx 27" headband ribbon for lining

Matching thread

Approx 1 yard of hat veiling

Straw off cuts of good size for trimming

Flower/feather trimming accent

Approx 1 yard matching/tonal/contrast 3 inch crinoline as trimming addition

Fabric or Millinery ribbon for bow trimming

2 yards crinoline straw for stiffening

Basic sewing kit

Straw stiffener

Please note this class also requires

**Travel size steamer,
and iron.**

If you are travelling by car, kindly bring extra to share with other students.



Biliana Borissova Embroidered veil

Embroidery hoop, about 6-7 inches (14-16 cm) in diameter. Please cover the hoop with silk ribbon.
Millinery veil, the one with the rhombus side of 2 cm.
Embroidery threads (Billiana will also bring some)
If desired, beads and crystals can be used.
Embroidery needle with a blunt tip.
Basic sewing kit