

# MILLINERY MEETUP 2026

## BASIC MILLINERY SEWING KIT

- ☐ FABRIC & PAPER SCISSORS
- ☐ ASSORTED HAND SEWING NEEDLES - INCLUDING CURVED
- ☐ GLASS BALL HEAD PINS
- ☐ BLOCKING PINS OR T-PINS & BLOCKING CORD
- ☐ ASSORTED SEWING THREADS
- ☐ WIRE CUTTERS
- ☐ NEEDLE NOSE PLIERS
- ☐ MEASURING TAPE
- ☐ WONDERCLIPS
- ☐ FABRIC MARKING PEN/PENCIL/CHALK
- ☐ 18" CLEAR PLASTIC RULER
- ☐ HAT ELASTIC & COMBS
- ☐ TRAVEL SIZE HAIR DRYER
- ☐ TRAVEL SIZE STEAMER & IRON
- ☐ FRAY CHECK
- ☐ SCOTCH & PAINTERS TAPE
- ☐ FAST DRYING FABRIC/CRAFT GLUE
- ☐ SMALL SPRAY BOTTLE
- ☐ CLING & PRESS AND SEAL WRAP
- ☐ PUOPÉE - DOLLY HEAD - FOAM HEAD
- ☐ SELECTION OF PAINT BRUSHES



# Maor Zabar

## Thermoplastic flowers

**KOBRACAST THERMOPLASTIC - A3 SIZE**

**half yard FINE WHITE SILK FOR PAINTING**

**SILK/TEXTILE PAINT**

**japanese brush pens**

**19 gauge millinery wire**

**floral tape**

**tulle - various colors**

**cardboard for patterns**

**pencil and eraser**

**COARSE SALT**

**basic millinery sewing kit**



# Jenny Roberts

## Crin Brim Headpiece and Trims

8.5 yards of 6" wide CRINOLINE with a drawstring - darker color suggested for beginners  
<https://www.judithm.com/product-category/horsehair/soft/>

Flat sinamay fascinator base [Sinamay Fascinator Base - Judith M Millinery Supply House](#)

1 yard of millinery wire white rayon covered #19 [White Rayon Covered Wire #19 - Judith M Millinery Supply House](#)

If your crin color is different than black, buy white and color with the marker (below)

Marker in color to match crin

Complimentary cotton fabric

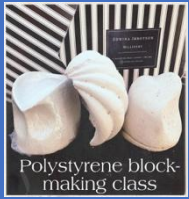
Thread matching to crin

Masking tape

<https://www.lowes.com/pd/Scotch-2020-0-94-in-x-60-yd-Masking-Tape/1002095858> and/or surgical tape (3M Micropore available in your local pharmacy)

Basic millinery sewing kit

Your choice of head fitting: either a premade headband or hat elastic



# Edwina Ibbotson

## Polystyrene blocks

	<b>POLYSTYRENE and <a href="#">foamcoat</a> - kit price paid in class - we will have a choice of polystyrene for you.</b>
	<b>HAND SAW</b>
	<b>SHARP SERRATED BREAD KNIFE</b>
	<b>PROTECTIVE WEAR - JUMPSUIT, FACE MASK, EYE PROTECTION</b>
	<b>FOAM PAINT BRUSHES</b>
	<b>HEAD COLLAR</b>
	<b>WIRE BRUSHES - 1 FINE - 1 REGULAR</b>
	<b>SHARPIE</b>
	<b>SANDPAPER - FINE AND MEDIUM</b>



**Biliana Borissova**

## **Leather Covered Headband and Feather**

**WIDE PLASTIC HEADBAND**

**LEATHER GLUE**

**ASSORTED FEATHERS & GOOSE FEATHER FRINGE**

**LEATHER - SOFT (LAMBSKIN) TO COVER HEADBAND**

**FELT SCRAPS TO MATCH LEATHER**

**HOT GLUE GUN AND STICKS**

**basic millinery sewing kit**